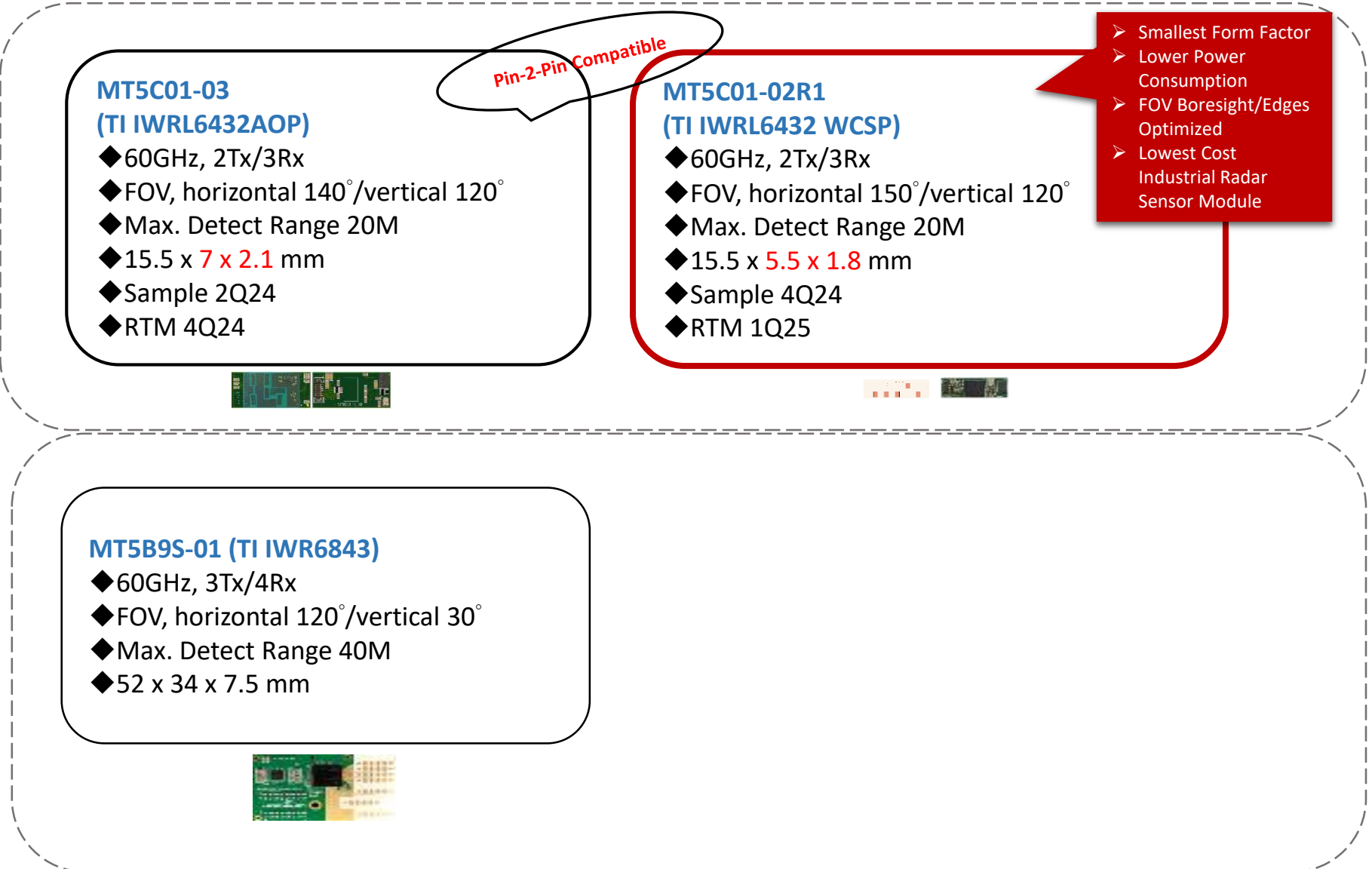




IoT mmWave Radar Module Portfolio



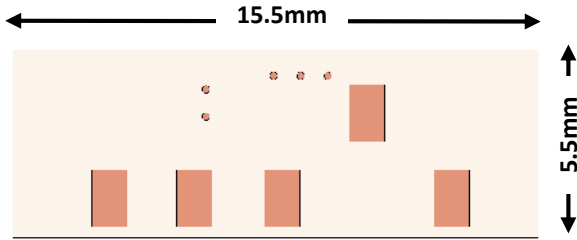


MT5C01-02R1 - IWRL6432 WCSP AoM module

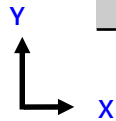
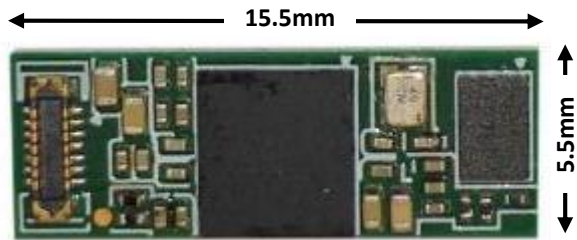
◆ Sample Q4 2024
◆ RTM Q1 2025

[MT5C01-02R1 @Jorjin.com](mailto:MT5C01-02R1@Jorjin.com)

Top Side

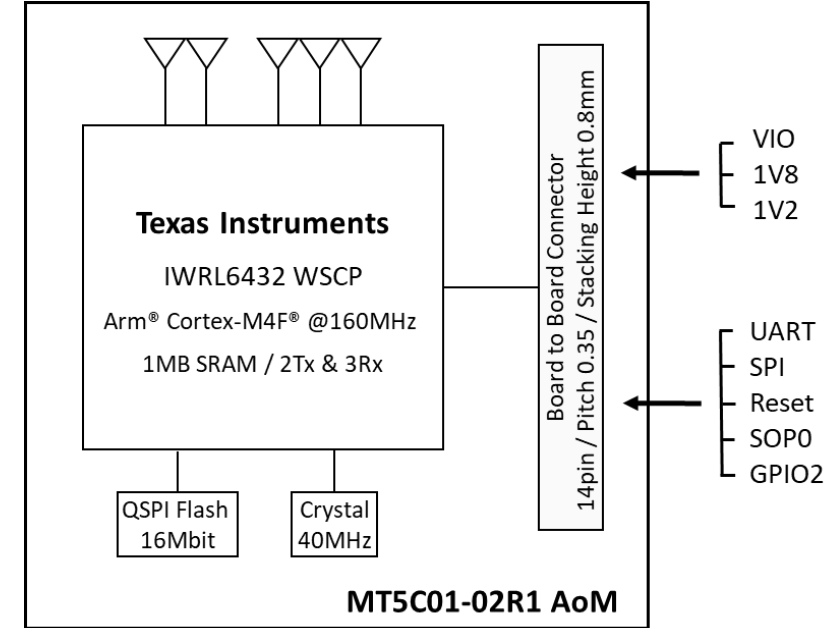


Bottom Side



Feature & Specification

Antenna	3RX and 2TX
Frequency Range	60~64 GHz
Power (Avg.)	<2mW to 25mW+ (depending on different SW)
Azimuth FoV (X-axis)	150°
Elevation FoV (Y-axis)	120°
Angular Resolution	Azimuth: 30°
Detect Range	15m at ± 75°, 20m at 0° for Human
Temperature Range	-40~85° C
Dimensions	15.5 mm (L) x 5.5 mm (W) x 1.8 mm (H)



call	+886-2-2649-0055
website	https://www.jorjin.com/
email	sales@jorjin.com



MT5C01-03 - IWRL6432AOP AoM module

◆ Sample Jul. 2024
◆ RTM Q4 2024

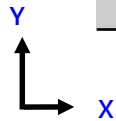
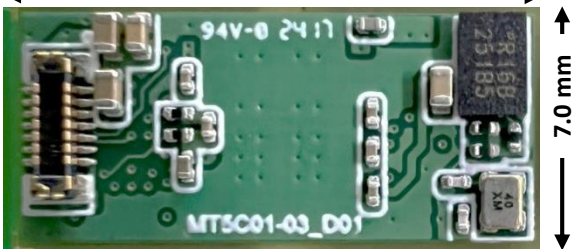
Top Side

15.5 mm



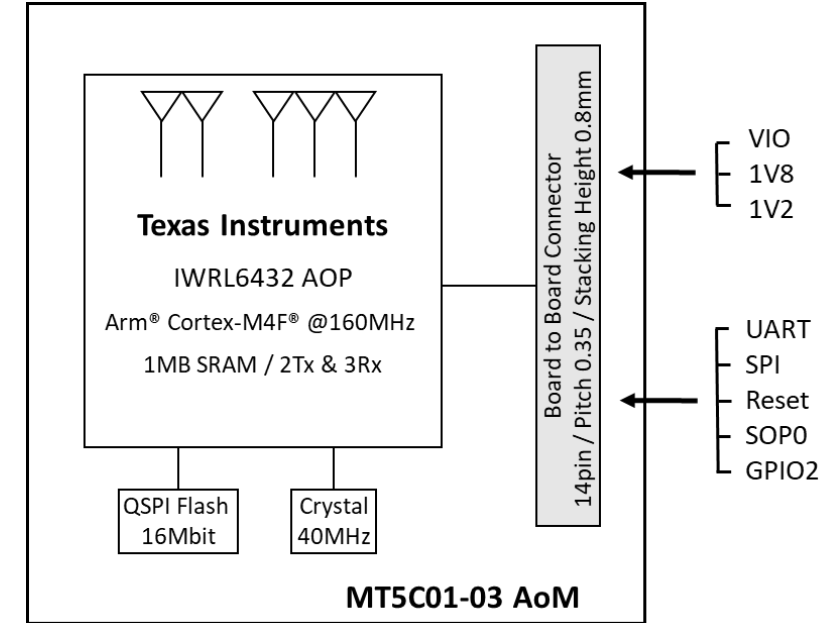
Bottom Side

15.5 mm



Feature & Specification

Antenna	3RX and 2TX
Frequency Range	57~64 GHz
Power (Avg.)	<2mW to 25mW+ (depending on different SW)
Azimuth FoV (X-axis)	140°
Elevation FoV (Y-axis)	120°
Angular Resolution	Azimuth: 29° / Elevation: 58°
Detect Range	15m at FOV Edges (20m at 0°) for Human
Temperature Range	-40~85° C
Dimensions	15.5 mm (L) x 7.0 mm (W) x 2.2 mm (H)



call +886-2-2649-0055

website <https://www.jorjin.com/>

email sales@jorjin.com